
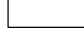





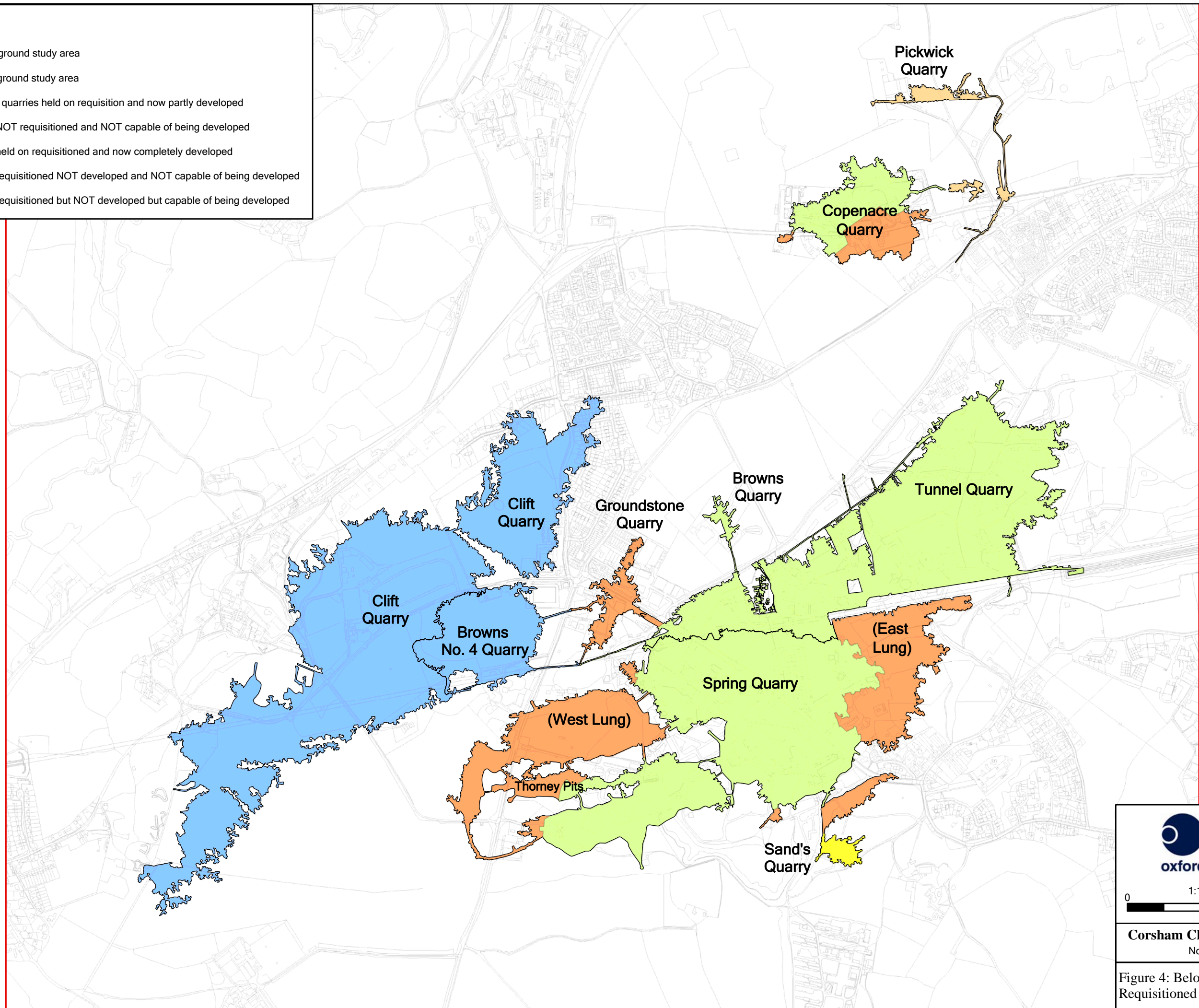


Key

-  Above ground study area
-  Below ground study area
-  Area of quarries held on requisition and now partly developed
-  Areas NOT requisitioned and NOT capable of being developed
-  Areas held on requisitioned and now completely developed
-  Areas requisitioned NOT developed and NOT capable of being developed
-  Areas requisitioned but NOT developed but capable of being developed



0 1:10,000 @ A3 500m

Corsham Characterisation Study  
November 2008

Figure 4: Below ground study area - Requisitioned status (c. 1943)